



Spare parts for drive products

High quality original parts safeguard your process

Operational performance depends on your critical assets functioning at all times. Failure of critical parts can cause disruption and financial loss. The risk of production interruption can be reduced by proactive maintenance and by the fast replacement of broken or faulty parts. In both cases, high quality spare parts are needed to safeguard your process.

Schneider Electric™ provides you with original spare parts as the ideal base for your preventive maintenance and – if needed – repair work. In addition to that, Schneider Electric uses its expert product knowledge to provide recommendations for the optimal set of spare parts taking into account your installed base.

Schneider Electric spare parts

Schneider Electric spare part service offers you parts which are:

- Original – As manufacturer Schneider Electric knows exactly the spare parts for its products.
- High quality – The parts are authentic and the same as used in the actual product. There is no fear for counterfeit parts when sourcing from the manufacturer.
- Available - Spare parts are available from our local, regional and global stocks. Fast delivery options can further accelerate the delivery of parts to you.

Key benefits - the right parts at the right time

Lower risk of downtime and performance degradation owing to the unavailability of the right spare parts.

Budget control comes from planning the availability of key parts and avoiding emergency purchases or excess inventory.

Flexibility with different options to manage spares, ensuring your needs are met.

se.com/vfd-services

Life Is On

Schneider
Electric

Parts for maintenance and other purposes

Schneider Electric offers wear parts which are needed to be changed on regular intervals as part of a preventive maintenance program. These parts include fans and filter pads and can be changed by your maintenance personnel or your service provider. Naturally, Schneider Electric also provides the workforce needed to do the change.

In addition to the wear parts, Schneider Electric provides parts for more complex repair, revitalization and maintenance actions. Those parts can only be changed with specially certified Schneider experts to help to ensure that no harm is done to the product in question.

Optimized set of spare parts

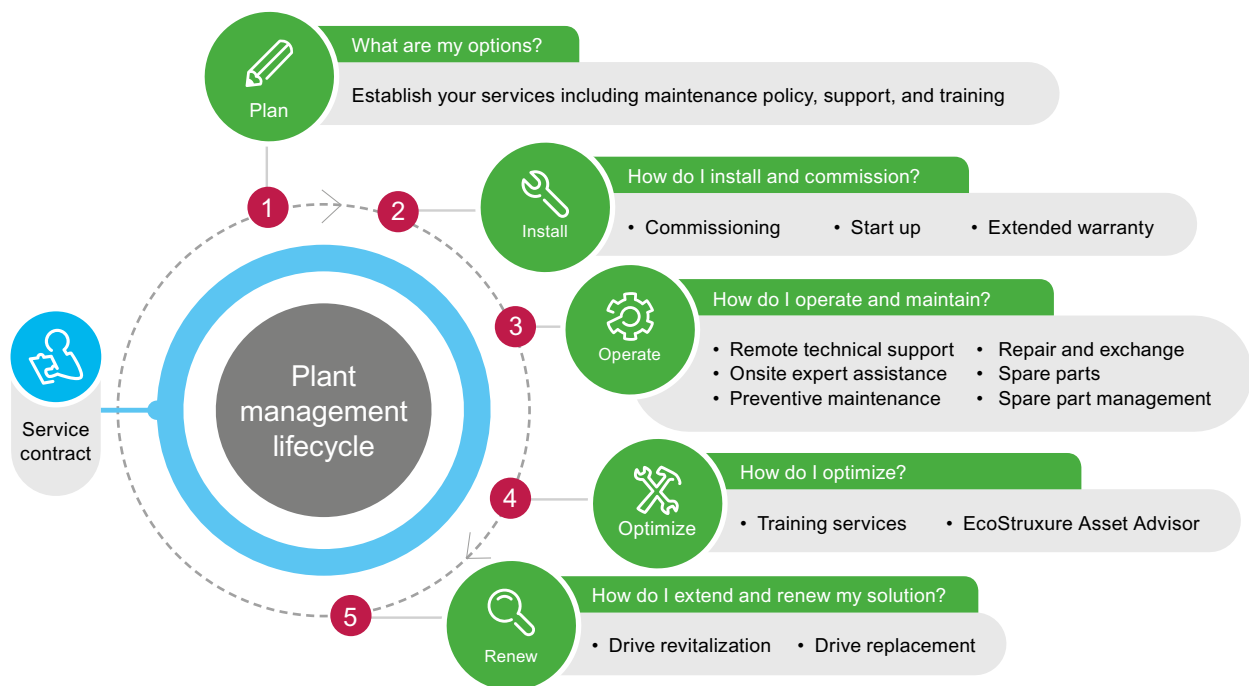
Based on your installed drives Schneider Electric is able to recommend an optimized set of spare parts for drive products to match the needs of your operation. Optimized set means minimizing the amount of various spares while still taking into account all the drive products included in your installed base. The target is to achieve optimal process availability and reduce cost.

Additional service – spare part management

To be prepared for any sudden interruptions it is often the best to keep a stock of parts at your site for immediate availability. As that might mean a burden for your networking capital costs, Schneider Electric offers Spare Part Management service. With this service you can select between onsite or off-site stock of spares optimized to your needs and just pay for the service instead of owning the stock.

Drive lifecycle services

Schneider Electric can provide a range of services throughout the lifecycle of your drive and plant operation. Contact your local representative to learn more.



se.com/vfd-services

Life Is On

Schneider
Electric

Schneider Electric Industries SAS
35, rue Joseph Monier - CS 30323
F92506 Rueil-Malmaison Cedex